



2025

PRODUCT CATALOG



Contact Information

Kingpump Enterprise Co.,Ltd

• Add: 3F., NO.10 Sec.1, Zhong Xing Rd., Wugu Dist, New Taipei City 248, Taiwan

• Tel: 886-2-8976-9791

• E-mail : kingpump@ms42.hinet.net

China: Rsto Co., Ltd

• Add: W804, Taiwan Technical, Yu Cheng Center, High-tech zone, Xiang An, Xiamen City, Fujian

• Tel: 86-0592-6769212 E-mail : 2376079080@qq.com



<http://www.kingpump.com.tw>

About King Pump

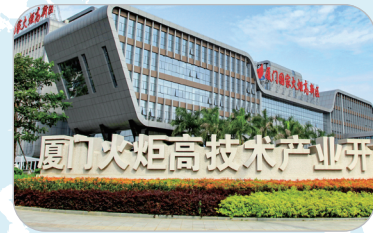


TIMELINE

In 1995
"King Pump" was founded



In 2000
Established a water pump factory in Vietnam



In 2006
Launched a branch in China



In 2017
Established the injection molding factory in Vietnam



In 2024
Vietnam factory realizes automated production

In 2001
Passed the CE international certification



In 2008
Passed the ISO 9001:2008



In 2019
Established the high frequency processing factory in Vietnam

Company Profile

King Pump has been deeply entrenched in Taiwan for nearly 30 years, dedicated to advancing various air-conditioning-related products. We have established factories in China and Vietnam, and have a professional technical team and complete after-sales service. Despite being an established brand, we remain true to our initial mission and continue to innovate. We launched the dehumidifier drain and air conditioner cleaning series. With the user-friendly designs, allowing customers to easily engage in DIY usage, save money, time and have a better quality of life.



Small Hippo 3M

- Applicable to split-type air conditioners below 25,000 B.T.U.
- Dimension/Weight : 18 x 9 x 14 cm/0.6kg
- Voltage/Frequency: AC 220V~240V 50/60Hz
- Drainpipe : $\Phi 4.3\sim 6.5\text{mm}(\pm 0.3)$
- Lightweight, easy to install and durable
- Check valve design to prevent condensate backflow
- 23 dB(A) @ 1m
- Drainage capacity : 0M / 1.4L / min 、 3M / 0.6L / min*
- Single package, 12 pcs/ctn



Water Genius 2.5M/6M

- Applicable to split-type air conditioners below 36,000 B.T.U.
- Dimension/Weight : 18 x 8 x 14 cm/0.98kg
- Voltage/Frequency: AC 220V~240V 50/60Hz
- Drainpipe : $\Phi 4.3\sim 6.5\text{mm}(\pm 0.3)$
- Lightweight, easy to install and durable
- Check valve design to prevent condensate backflow
- 2.5M : 22 dB(A) @ 1m 6M : 45 dB(A) @ 1m
- Drainage capacity : 0M / 2L / min 、 6M / 0.78L / min*
- Single package, 12 pcs/ctn



Quiet

Cube 10M

- Applicable to split-type air conditioners below 30,000 B.T.U.
- Dimension/Weight : 14.6 x 8.6 x 17 cm/0.6kg
- Voltage/Frequency: AC 100V~240V 50/60Hz
- Drainpipe : $\Phi 4.3\sim 6.5\text{mm}(\pm 0.3)$
- Dual voltage, ultra-quiet motor and high water head
- Check valve design to prevent condensate backflow
- 19 dB(A) @ 1m
- capacity : 0M / 0.58L / min 、 10M / 0.52L / min*
- Single package, 12 pcs/ctn



Quiet

Seal 3M

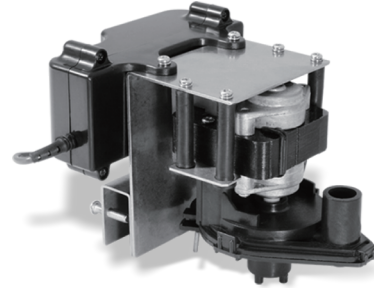
- Applicable to split-type air conditioners below 36,000 B.T.U.
- Dimension/Weight : 17.8 x 11 x 13 cm/1.4kg
- Voltage/Frequency: AC 220V~240V 50/60Hz
- Drainpipe : $\Phi 4.3\sim 6.5\text{mm}(\pm 0.3)$
- Shaded pole motor, sensitive carbon rods
- Check valve design to prevent condensate backflow
- 22 dB(A) @ 1m
- capacity : 0M / 2L / min 、 3M / 0.8L / min*
- Single package, 6 pcs/ctn

Quiet



Baby Walrus 2.5M

- Applicable to split-type and ceiling-type air conditioners below 36,000 B.T.U.
- Dimension/Weight : 17 x 9 x 11 cm/1kg
- Voltage/Frequency: AC 220V~240V 50/60Hz
- Drainpipe : $\Phi 4.3\sim 6.5\text{mm}(\pm 0.3)$
- Shaded pole motor, quiet and long service life
- Check valve design to prevent condensate backflow
- 19 dB(A) @ 1m
- Drainage capacity : 0M / 1.8L / min 、 2.5M / 0.7L / min*
- Single package, 12 pcs/ctn



Mounted type 1.2M

- Applicable to ceiling-type air conditioners below 50,000 B.T.U.
- Dimension/Weight : 10.4 x 14.2 x 8.9cm/0.8kg
- Voltage/Frequency: AC 220V~240V 50/60Hz
- Drainpipe : $\Phi 16\sim 20\text{mm}$
- Sensor alarm switch design
- Shaded pole motor, sensitive carbon rods
- 35 dB(A) @ 1m
- Drainage capacity : 0M / 1.6L / min 、 1.2M / 0.5L / min*



Hippo 4M

- Applicable to split-type and ceiling-type air conditioners below 100,000 B.T.U.
- Dimension/Weight : 21 x 13.5 x 17 cm/1.6kg
- Voltage/Frequency: AC 220V~240V 50/60Hz
- Drainpipe : $\Phi 8\sim 11\text{mm}$
- Transparent cover for easy cleaning
- Check valve design to prevent condensate backflow
- 40 dB(A) @ 1m
- Drainage capacity : 0M / 5.2L / min 、 4M / 0.5L / min*
- Single package, 6 pcs/ctn



Hippo 9M

- Applicable to large floor-standing air conditioners below 150,000 B.T.U.
- Dimension/Weight : 21 x 13.5 x 17 cm/1.7kg
- Voltage/Frequency: AC 100V~240V 50/60Hz
- Drainpipe : $\Phi 8\sim 11\text{mm}$
- Dual voltage, brushless motor, high efficiency, long life
- High drainage capacity, for large floor air conditioners
- 40 dB(A) @ 1m
- capacity : 0M / 8.4L / min 、 3M / 3.7L / min*
- Single package, 6 pcs/ctn



Green Giant cleaning machine

- Dimension/Weight : 35 x 24.8 x 35.5 cm/4.3kg
- Voltage: AC100V~240V · DC18~24V(Lithium battery)
- Dual voltage, AC/DC both can be use
- 360° rotating nozzle, clean without blind spot
- Dual bucket design, easy to use and carry
- With extension tube, it is easier to clean the outdoor unit
- 3 types of nozzles, 3 spraying methods



A380-3 cleaning machine

- Dimension/Weight :35 x 24.8 x 35.5 cm/4kg
- Voltage: AC100V~240V · DC18~24V
- Dual voltage, AC/DC both can be use
- 360° rotating nozzle, clean without blind spot
- Dual bucket design, easy to use and carry
- With extension tube, it is easier to clean the outdoor unit
- Corrosion-resistant material, can use chemical solution*



Base type of cleaning cover CB-06

- Applicable for split air conditioner cleaning
- Dimension/Weight : 71 x 38 x 9cm/1.5kg
- 120(Max.telescopic length)X 39(W)X 20 cm(depth area)
- Eco-friendly PVC, low temp. resistant, weak acid
- Aluminum support brackets, lightweight (1.5kg)
- Elastic telescopic water pipe (77~280cm)
- Single package, 6 sets/ctn



Protection cover CB-07

- Must use with CB-06
- Dimension/Weight : 35 x 30 x 7cm/0.5kg
- Airtight protection to prevent water splash
- Eco-friendly PVC, low temp. resistant, weak acid
- Aluminum support brackets, lightweight (0.5kg)
- Full wrap-around, easy to install
- Single package, 12 sets/ctn



Full type of cleaning cover
CB-08

- Applicable for split air conditioner cleaning
- Dimension/Weight : 71 x 38 x 9cm/2kg
- 120(Max.telescopic length)X 39(W)X 20 cm(depth area)
- Eco-friendly PVC, low temp. resistant, weak acid
- Aluminum support brackets, lightweight
- Elastic telescopic water pipe (77~280cm)
- Single package, 6 sets/ctn



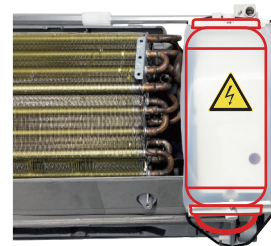
Plus size of cleaning cover
CB-160

- Applicable for plus size wall-mounted air conditioner cleaning
- Dimension/Weight : 81 x 39 x 9cm/1.8kg
- 160(Max.telescopic length)X 39(W)X 25 cm(depth area)
- Eco-friendly PVC, low temp. resistant, weak acid
- Aluminum support brackets, lightweight (1.8kg)
- Elastic telescopic water pipe (77~280cm)
- Single package, 6 sets/ctn.



Ceiling or cassette type of cleaning cover
KCB-01

- Applicable for ceiling or cassette type air conditioner cleaning
- Dimension/Weight : 73 x 15 x 13cm/2kg
- (L)125 x(W)125 cm (Max. Cleaning Area)
- Eco-friendly PVC, low temp. resistant, weak acid
- Aluminum support brackets, lightweight
- Elastic telescopic water pipe (77~280cm)
- Single package, 6 sets/ctn



Electrical panel cover CB-09

- Dimension/Weight :14.3 x 4.2 x 4.2cm/170g
- Stretchable expansion +40%
- It needs to be used with the base type cleaning cover
- Includes S-hook



Vertical choke valve

- Air conditioner accessories
- Dimension/Weight : 7.2 x 4 x 2.4cm/15g
- Prevent marsh gas corroding copper pipes
- Prevent windy backflow from causing noise
- Block odor and bugs entering
- Applicable to $\Phi 14/\Phi 16$ mm drainage pipe



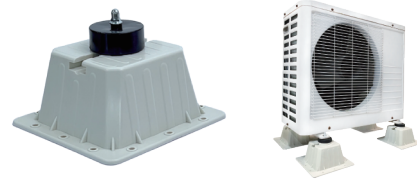
Drainage pipe

- Drainpipe : $\Phi 4.6\sim 6.8$ mm- 90M
 $\Phi 8\sim 11$ mm- 50M
- Use with King Pump products



Small Whale 3M

- Dehumidifier dedicated
- Dimension/Weight :10 x 5 x 8.5cm/0.28g
- Frequency: AC 100V~240V 50/60Hz
- Drainpipe : $\Phi 4.3\sim 6.5$ mm(± 0.3)
- Quiet design for a comfortable environment
- Compact and easy to operate
- Check valve design to prevent condensate backflow



set of four

Floor standing pad & shock pad

- Dimension/Weight :14.2 x 15 x 7.4cm/244g
- Air conditioner outdoor unit parts
- Shock absorption and cushioning
- High load-bearing capacity
- Abrasion resistant and durable
- Suitable for air conditioning outdoor unit



Baby Walrus installation kit

- Dimension/Weight :6.5 x 7.5 x 1.8cm/86g
- Baby Walrus ceiling cassette installation accessories
- Suitable for ceiling or cassette type air-conditioners
- Easy to install

